

# Lab 9

Vision, Hearing  
Ex 24, 25

1

---

---

---

---

---

---

---

---

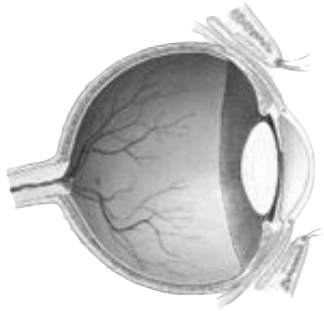
---

---

---

---

## External Eye



- Eyelids
- Eyelashes
- Conjunctiva
  - mucous membrane
  - lines inside of eyelid and outer surface of eyeball

2

---

---

---

---

---

---

---

---

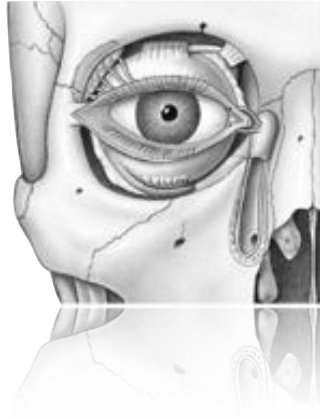
---

---

---

---

# Lacrimal System



- Lacrimal Gland
  - produces tears
- Lacrimal Canals
- Lacrimal Sac
- Nasolacrimal Duct

3

---

---

---

---

---

---

---

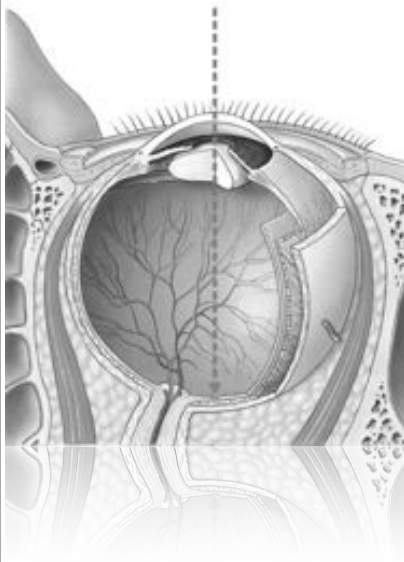
---

---

---

---

# Layers of the Eye



- Sclera
  - fibrous layer
  - white of the eye
  - forms cornea anteriorly
- Choroid
  - vascular layer
  - dark pigment
- Retina
  - photoreceptor layer

4

---

---

---

---

---

---

---

---

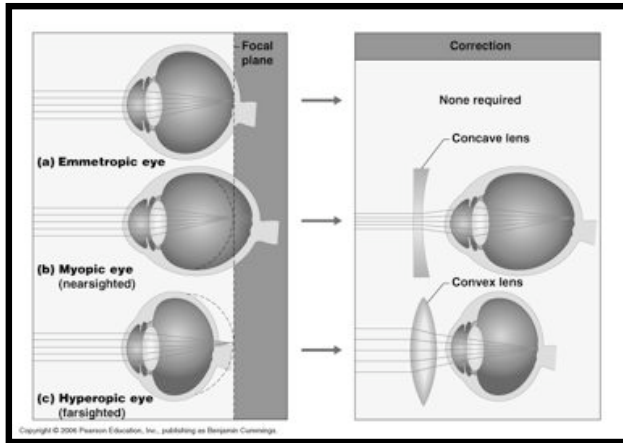
---

---

---



# Visual Defects



7

---

---

---

---

---

---

---

---

---

---

---

---

# Retina

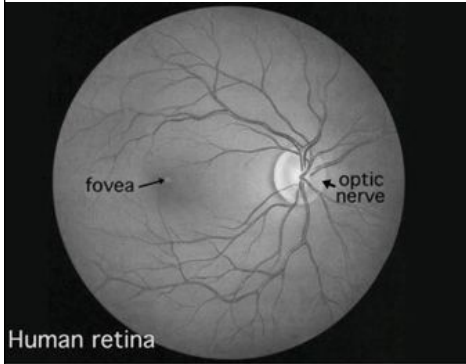


Fig. 1. Human retina as seen through an ophthalmoscope.

- Sensory layer made of photoreceptors called rods and cones
- light focuses on the fovea
  - made up mostly of cones
- optic disc
  - area where optic nerve exits the eye
  - “blind spot”

8

---

---

---

---

---

---

---

---

---

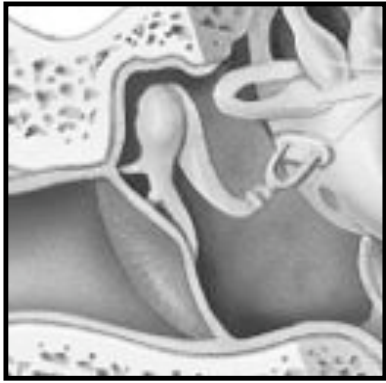
---

---

---



# Inner Ear



- Ear Ossicles
  - malleus
  - incus
  - stapes

11

---

---

---

---

---

---

---

---

---

---

---

---

# Inner Ear



- Vestibular Apparatus
  - semicircular canals
  - vestibule
- Cochlea
- hearing

12

---

---

---

---

---

---

---

---

---

---

---

---